

Connect Your SecuGen® Parallel Fingerprint Reader to PC

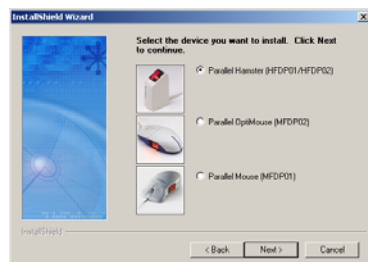
- Step 1** Check or set the parallel port mode in your BIOS configuration. EPP parallel port mode is recommended. (However, if your computer has problems operating devices using EPP mode, then try ECP mode.) Turn off the computer.
- Step 2** Connect the PS/2 connector to the PS/2 mouse (or keyboard) port on the back of the computer.
- Step 3** Connect the parallel port adapter to the parallel (printer) port on the back of the host computer.
- Step 4** Turn on the computer. You may now proceed with software installation. Insert either your biometric software application CD or the supplied Device Driver CD (instructions below) to install the device driver.

Install Drivers using the SecuGenDriverInstall Program

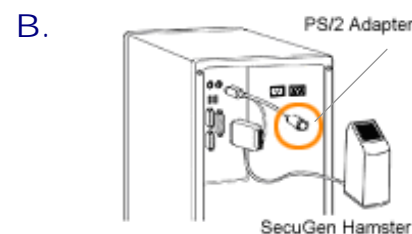
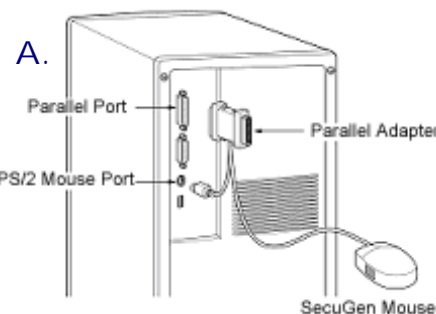
- Step 1** First connect the SecuGen reader to your computer (see above and right).
- Step 2** Insert the CD. The *SecuGenDriverInstall* program will open automatically. At the first window, click on **Parallel Driver**.



- Step 3** Select the fingerprint reader you are installing.



- Step 4** Follow the instructions on the screen to complete installation.
- Step 5** Check the *Device Diagnostic Utility* box to practice capturing fingerprints and to optimize the brightness settings of the reader.



Troubleshooting Tips

Device not found or won't initialize.

Parallel Port Modes can vary for desktop and laptop computers. Selecting the correct parallel port mode is important for proper device operation. EPP (Enhanced Parallel Port) is the recommended mode for all SecuGen® parallel readers. See the computer manufacturer's owner manual for instructions on checking or changing these settings, usually found in the I/O device section of your BIOS configuration. (SecuGen parallel readers can use either 378h or 278h standard addresses).

How do I connect other devices?

Local printers and other devices can plug directly into the back of SecuGen's pass-through parallel port adapter to share the port (Fig. A). Additionally, the parallel Hamster has a Y-type PS/2 extension so that you can plug in your mouse or keyboard after installing the Hamster (Fig. B).

I've lost my driver CD.

You may obtain updated device drivers by downloading the *SecuGenDriverInstall* program from SecuGen's website at: www.secugen.com/download.

For more help: Refer to the document *SecuGen Peripheral User Guide*.

For Best Results when Reading a Fingerprint

1. Place the pad (NOT the tip) of your finger so that it covers the sensor window completely.
2. Don't use too much pressure. Apply only as much pressure as you would need to hold a piece of paper between fingers.

